



Middle Grand Chapter's Annual General Meeting

January 27, 2024



Trout Unlimited Canada



Truite Illimitée Canada

Agenda

Topics

Intro & President's Message	1:00
David Fields Presentation	1:10
Treasurer's Report	1:30
Projects Report	1:35
Data Report	1:55
Communications Report	2:15
Questions	2:20
Nominations	2:30
Conclusions	2:40





Welcome & Introductions



Trout Unlimited Canada



Truite Illimitée Canada

Chapter Executives

Hajnal Kovacs, President

Larry Mellors, VP

Tyler Dunsmore, VP

Mark Hartley, Treasurer

Andy Dietrich, Secretary , Director of Communications and Director of Strategic Planning

Amanda Draves, Director of Data

Larry Bell, Director of Fundraising

Steve Becket, Director of Stakeholder Relations

Barry Buchwald, Projects Director

Scott Puillandre, Projects Director

Archie McLarty, Director at Large

Brent Elliott, Director at Large

Larry Halyk, Director at Large

Mike Heyming, Director at Large

Stephanie Lantos, Director at Large

Warren Yerex, Director at Large

President's Message



Saving Streamers fly Tying

Grass roots fund raising effort, with the intent of supporting stream rehabilitation and restorations projects on the Maitland and Middle Grand Rivers.

- How it works? Local fly tiers donate their flies, flies are posted on the face book page for auction.
- Use these funds to effectively help improve and support naturalized and native cold water species and their environments, in the Middle Grand River watershed.

A donation from fundraising efforts in 2022 and 2023. Please find enclosed a donation of **\$1,050**

Saving Streamers Fly Tying - Neil Leduc & Tyler Dunsmore





Looking forwards to 2024





Treasurer's Report

Mark Hartley - Treasurer



Trout Unlimited Canada



Truite Illimitée Canada

Financial Statement – Dec. 31, 2023

Enbridge	Donation	Expense	
	\$ 15,600.00	\$ 100.00	
		\$ 11,303.96	
		\$ 135.30	
	\$ 15,600.00	\$ 11,539.26	\$4,060.74
	Income	Expense	
Donations	\$ 285.00		
	\$ 516.80		
Donations	\$ 801.80		
AGM	\$ 137.00	\$ 141.25	
		\$ 16.93	
		\$ 222.09	
AGM	\$ 137.00	\$ 380.27	-\$ 243.27
Office (web site)		\$ 373.88	
Head Office	\$ 975.00		
Field Projects		\$ 816.43	
		\$ 303.67	
		\$ 836.00	
Field Projects		\$ 1,956.10	





Projects

Scott Puillandre – Project Director



What we did in 2023

- Horner Creek – TREES!!!

More great work at:

- Washington Creek
- Alder Creek
- Landon's Creek



Horner Creek



Background - Horner Creek

- Whitemans-Horner Creek system is unique as a coldwater stream. Its headwaters and mid reaches are called Horner Creek and drain a landscape that features intensive agriculture and little groundwater discharge.
- Riparian reaches of upper Horner Creek are mainly abandoned pastures or narrow grass buffers adjacent to cropland. They are very exposed to solar radiation, making summer water temperatures too warm to support coldwater species.
- Tree planting in the upper reaches are techniques that would mitigate thermal impacts and increase resilience in the face of climate change.



Highlights - Horner Creek

- Huge spring tree planting
- Approximately 600 trees planted
- Over 80 volunteers
- Business partnership with Enbridge Gas
- More to come in 2024!



Enbridge Corporate Planting





+33 TUC Tree
Planting
Volunteers



In-stream Work Attendance: 2023

- **Washington**

- July 12 - 15 volunteers tore out beaver dam & debris clean up

- **Alder Creek**

- July 26 - 9 Volunteers debris clean up
- Aug 9 - 9 volunteers debris clean up

- **Landon's Creek**

- Aug 23 - Cancelled
- Sept 6 - 3 Volunteers debris clean up
- Sept 20 - 10 Volunteers built large sediment mat

= 46 volunteers doing in-stream restoration



Washing Creek



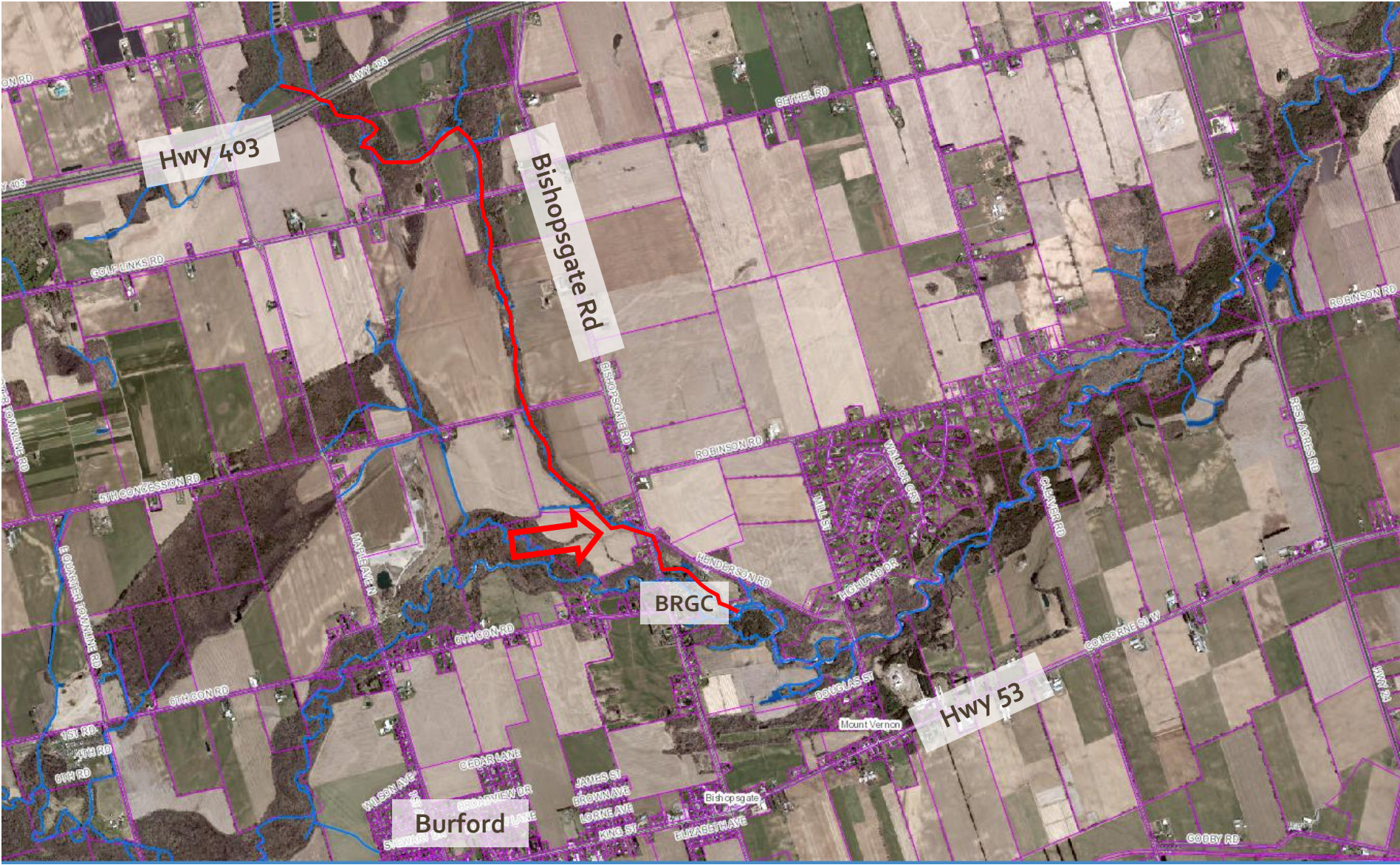
Alder Creek



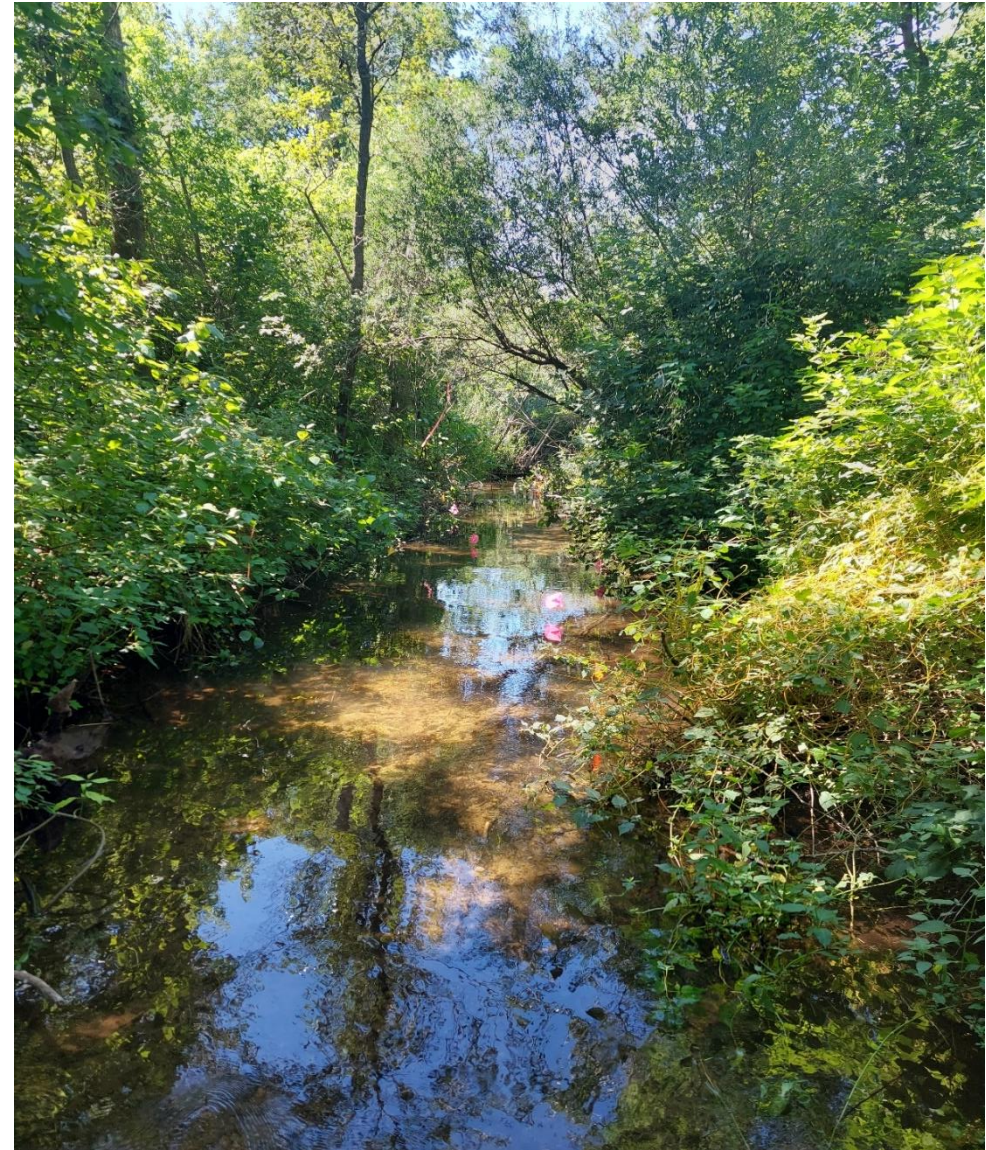
Landon's Creek



Landon's Creek

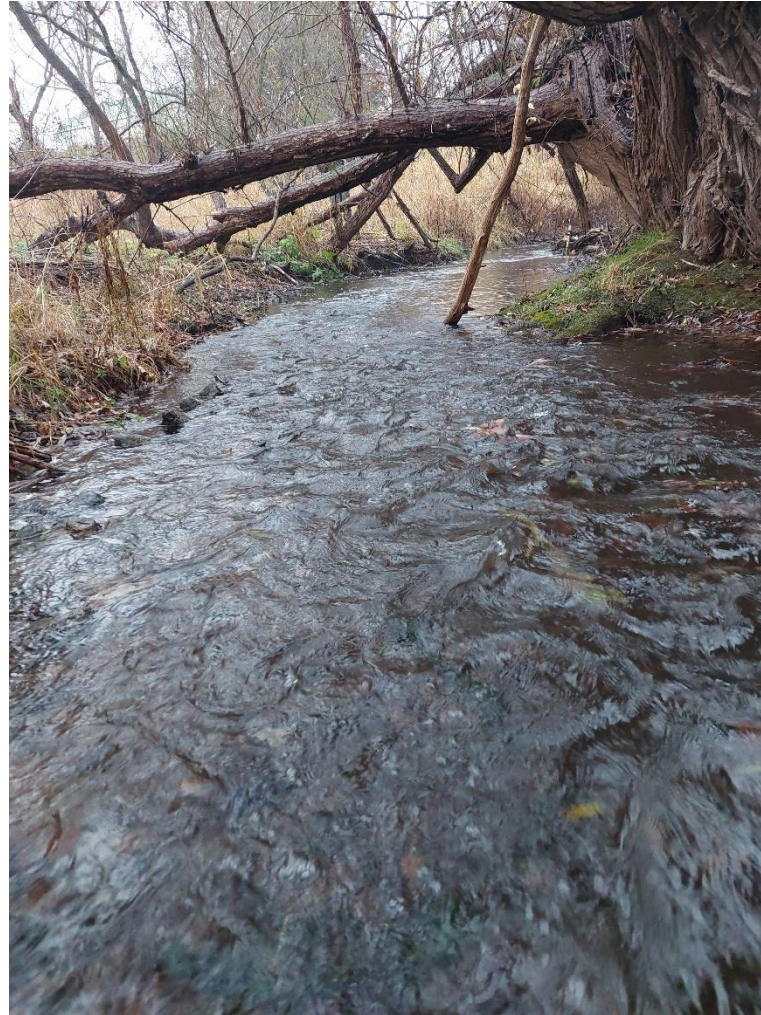


Previous work on Landon's Creek







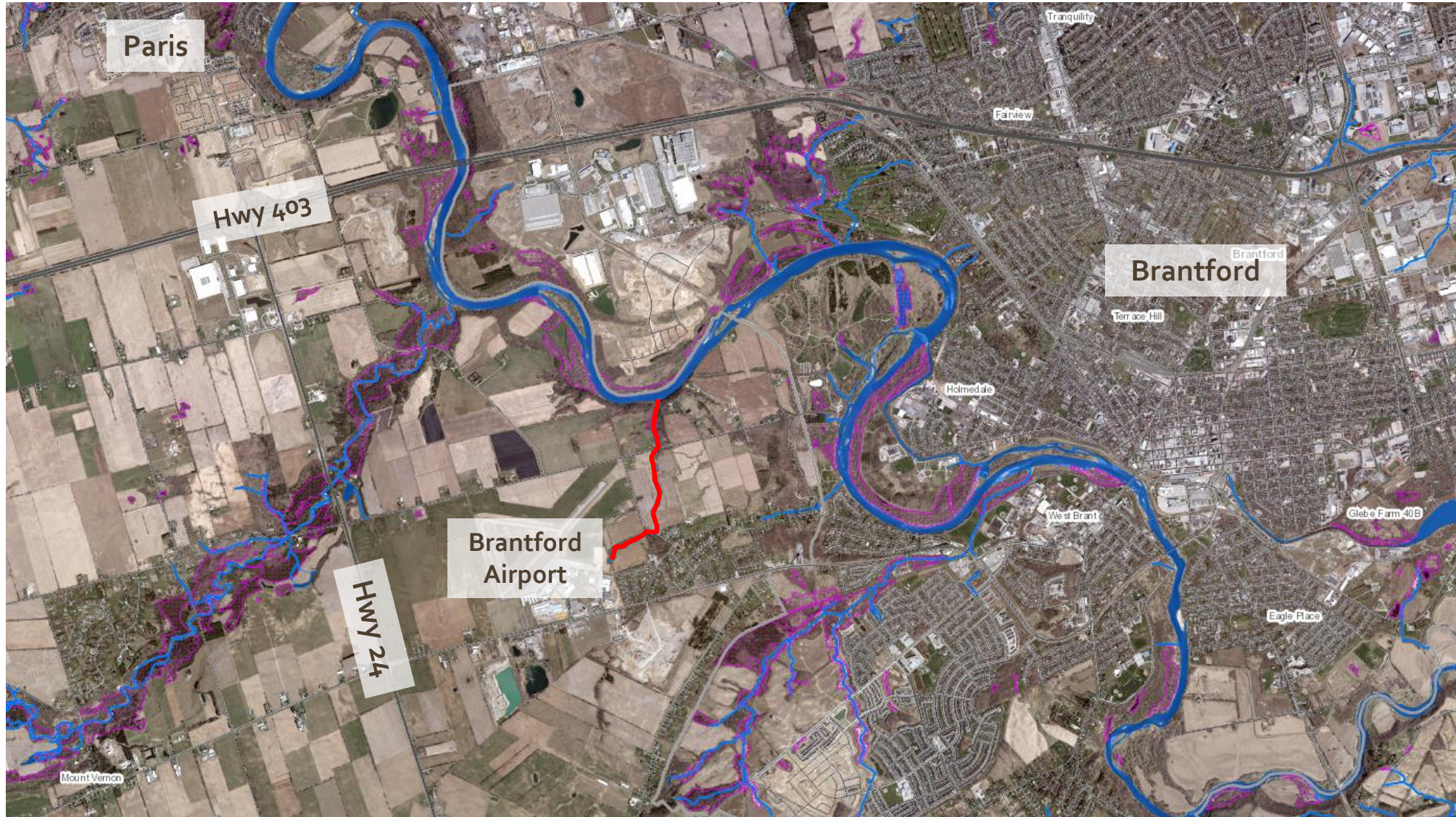


What Does 2024 look like?

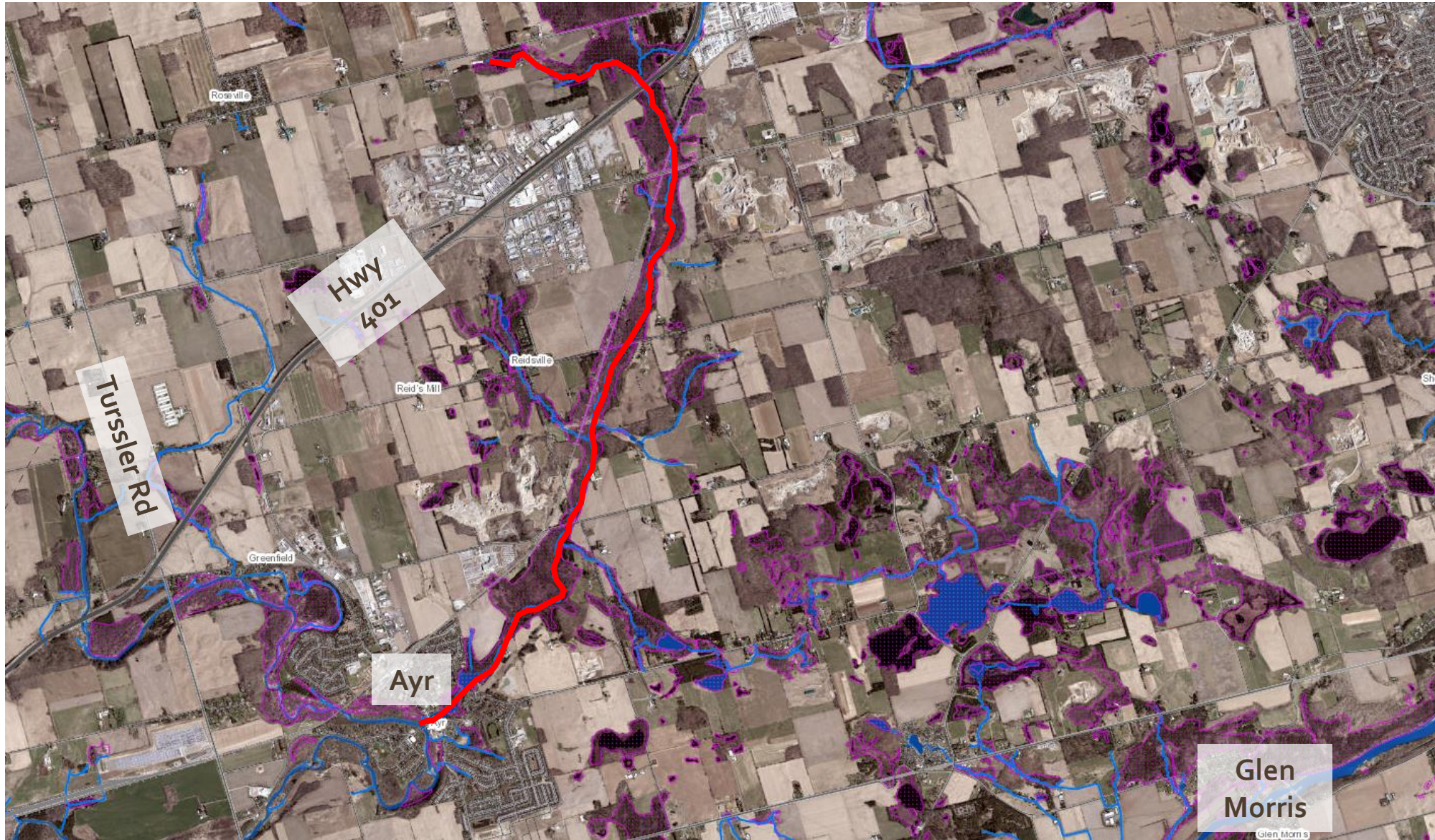
- Priorities (TBC):
 - Tree Planting
 - Horner Creek- Spring.
 - Charlie Creek – Fall.
 - Landon's Creek – keep up the good work.
 - Cedar Creek – a new creek for us.
 - Airport Creek – small creek, big returns.
 - Invasive Species removal (buckthorn, phragmites, etc.)?



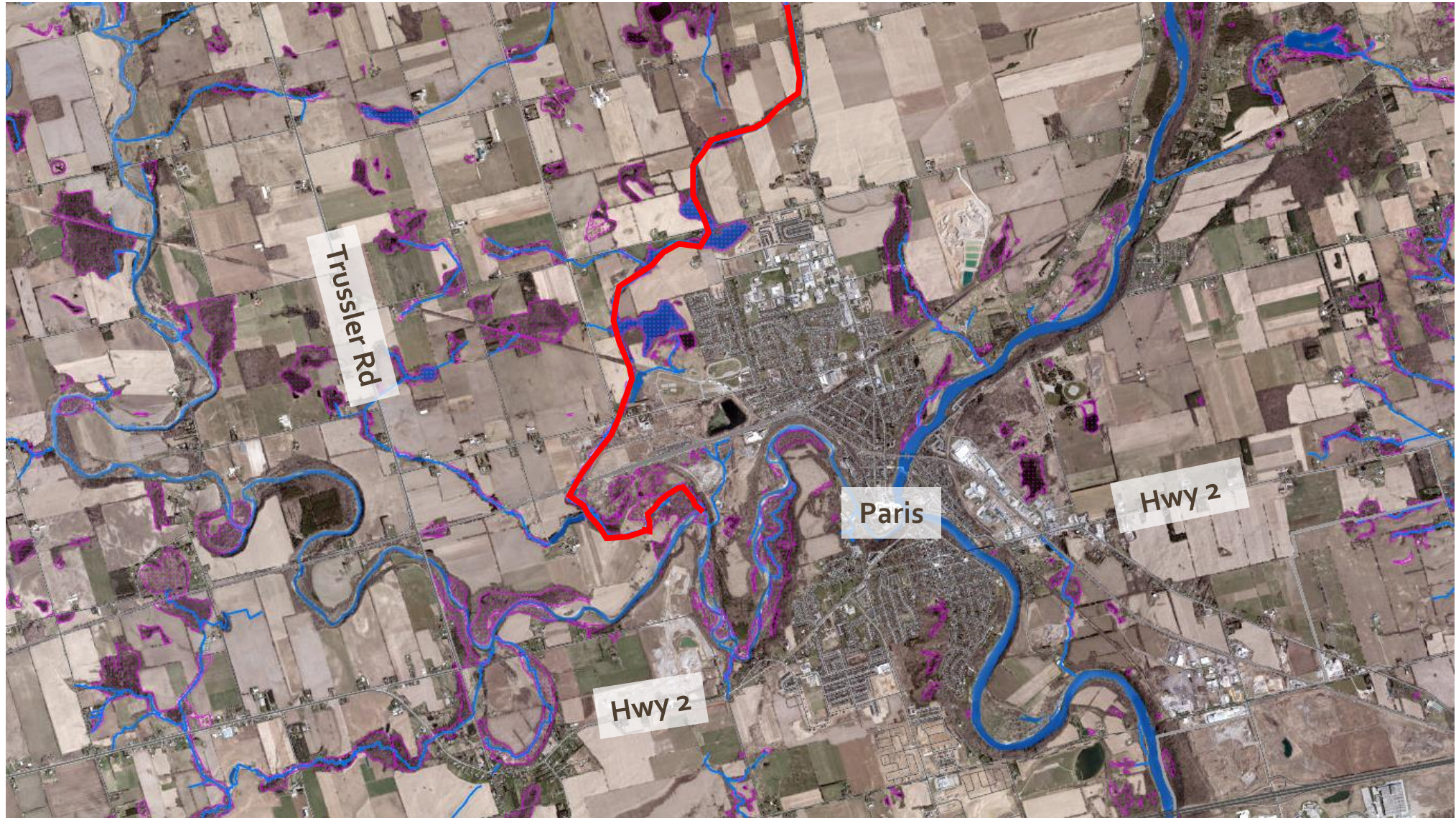
Airport Creek



Cedar Creek



Charlie Creek



Workday Structures (TBC)

- **Spring Tree Plant**
 - Saturday in late April / early May.
 - External funding – 600 trees on Horner’s Creek
- **Invasive Species Removal**
 - Saturday in May.
- **Worknights**
 - June to mid-September.
 - One or two worknights per month - 6:00pm to 9:00pm.
 - Weekend?
- **Fall Tree Plan**
 - Saturday in late September or early October.
- Keep an eye on the Chapter’s Facebook & e-mails for details.





Data Report

Amanda Draves & Larry Halyk



Data Collection in 2023



Why Collect Data?

- Provides information about the condition of our watershed.
- Identifies areas of concern, where streams would benefit from our effort.
- Measures progress of our rehab projects.
- Identifies data gaps, where info is otherwise unknown (supplement agency data)
- Legitimate leg to stand on!



Trout Unlimited
Canada

Middle Grand River Chapter Temperature Data Collection Form*

Date AUG 26/14 Investigator(s) HALYK
 Start Time: 4:36 PM Air Temp (in shade) 30.2°C Cloud Cover (%) 60
 End Time: 5:39 PM Air Temp (in shade) 30.1°C Cloud Cover (%) 50

Stream	Location	Temp (°C)	Time
Burgess Lake Outlet	Motherall Rd (upstream)	23.6	4:40 PM
" " "	Twp Rd 6 W	21.2	4:47
" " "	Twp Rd 6 E	27.9	4:52
" " "	Blenheim Rd (downstream)	20.8(1)	4:56 PM
Washington Creek	Twp Rd 12 (downstream)	21.2	5:05 PM
" "	Ox. County Rd 3	21.1	5:09
" "	Oxford County Rd 8	21.8	5:13
" "	Twp Rd 14	18.8	5:18
" "	Oxford - Waterloo Townline (upstream)	13.4	5:22 PM
Hiller Creek	Upper Blenheim Rd near Townline (upstr.)	-	standing pools
" "	Twp Rd 14	24.5	5:31
" "	Middle Blenheim	19.5	5:36
" "	Lower Blenheim (Perry's Creek) (downstr.)	17.9	5:39 PM
Whitemans Creek	near mouth @ 5 Oaks	19.5	3:00 PM

Observations and Comments:

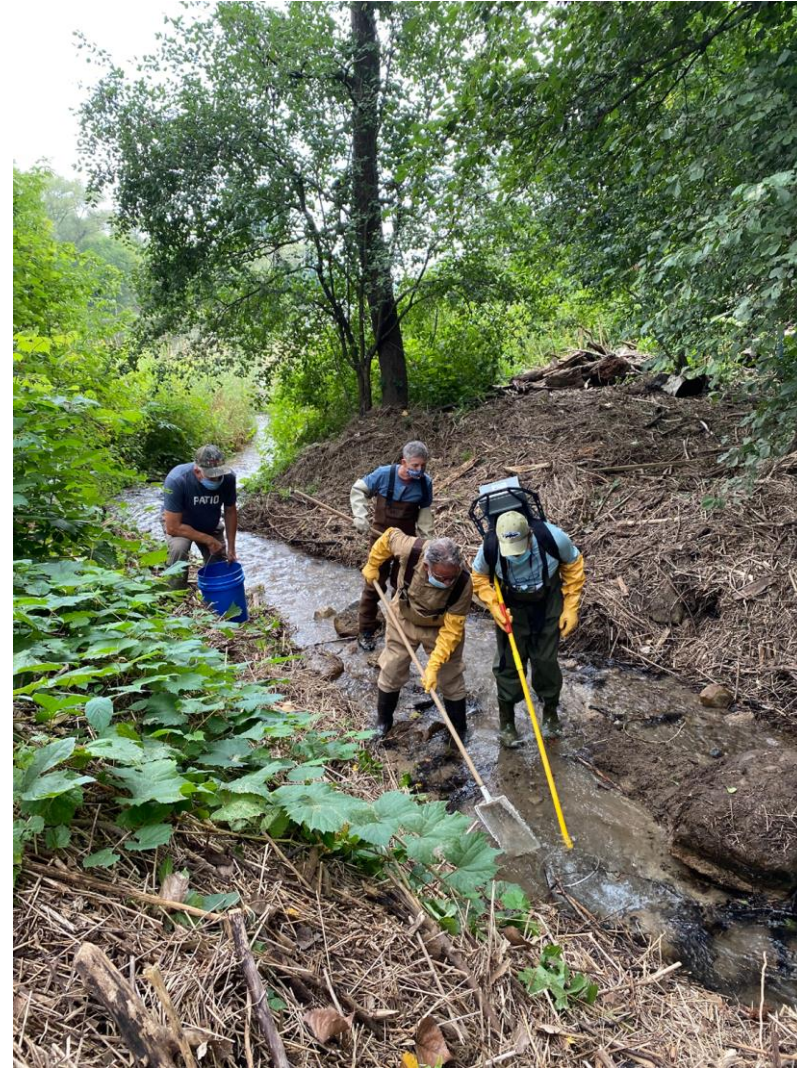
Burgess → Large open pasture warms creek between Rd West location & Rd 6 East location - raises temp 6+°C. BUT, major spring discharge between Rd 6 E + Blenheim Rd lowers temp 7+°C in less than 1 km !!
 Washington - A Beaver Dam removed upstream of Rd 14 on Aug 20, isn't another major dam between Townline + Rd 14 remains as of Aug 26.
 Hiller - noticeable increase in baseflow (groundwater) between Rd 14 + Perry's Creek.

*To be used to collect late afternoon "Spot Temperatures" on streams during hot and sunny days between July 1 and August 31. See page 2 for detailed instructions.

Spot Temperature Form

Data Collected Since 2013

1. Fish Community Surveys
(electrofishing)
2. Water Temperatures:
(Continuous & Spot Checks)
3. Spawning Surveys (spring
and fall)



2023 Temperature Data Logger Survey



- 14 Stations on 3 streams
 - Whitemans/Horner: 13
 - Landons: 4
 - Gilbert Creek: 1
- Loggers installed in late June & retrieved in November
- Temperature taken every 30 minutes

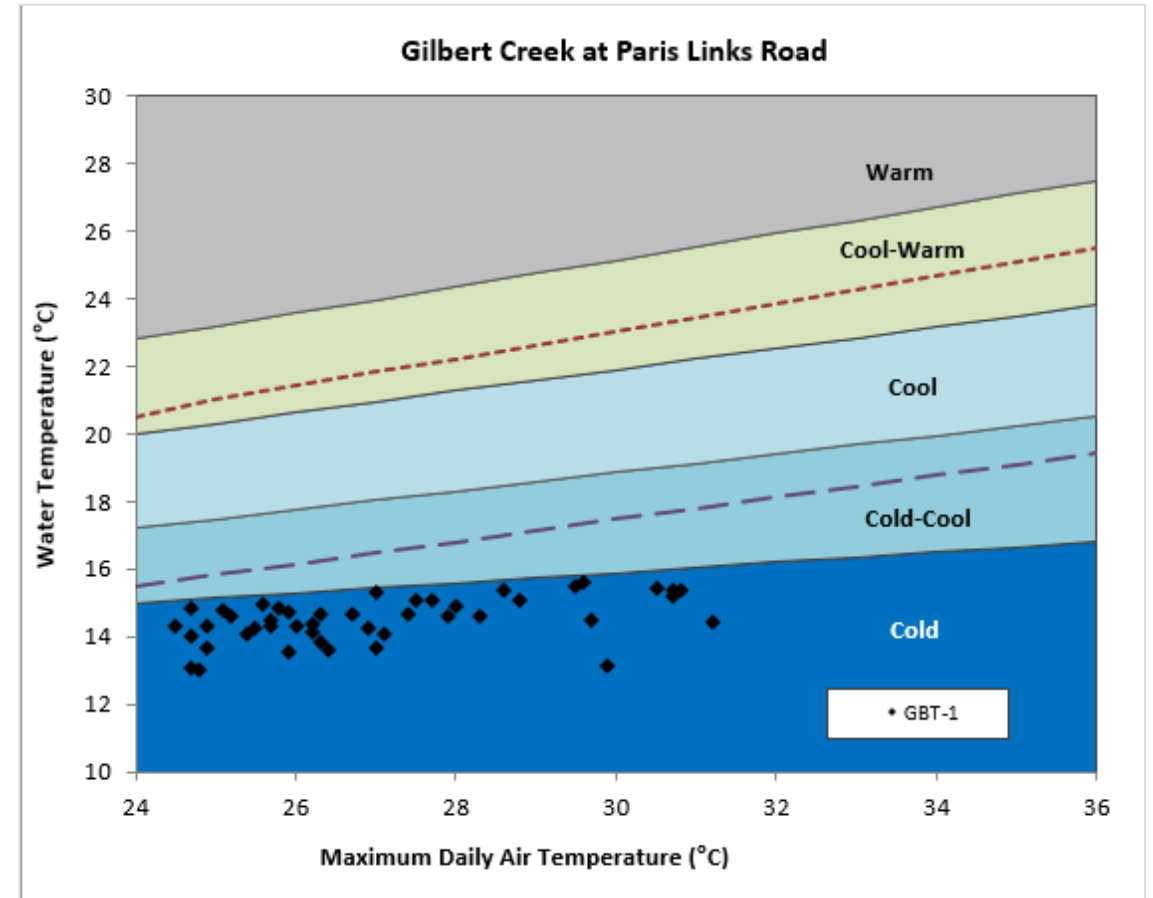
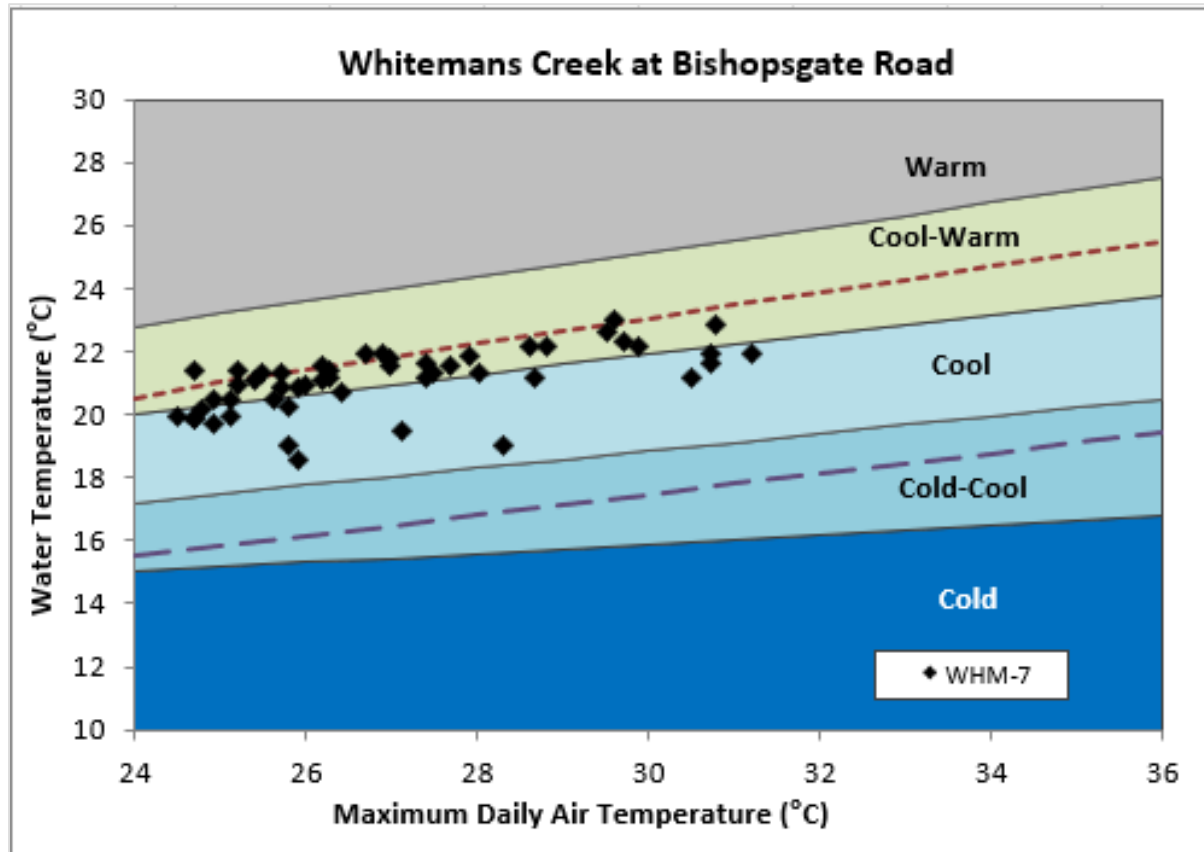


Thermal Categories

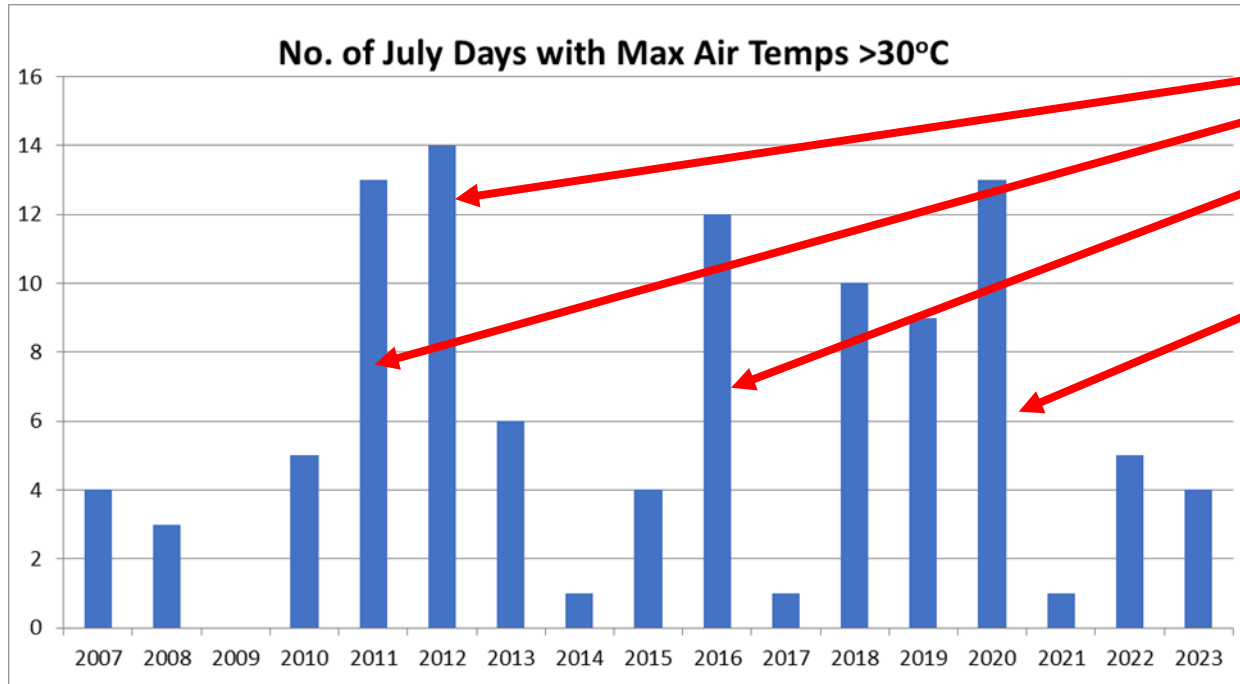
(based on mean July Temperature and Nomograms)

Category	Mean July Temp (°C)	Fish Community
Cold	< 16.9	Brook Trout, Sculpins
Cold-Cool Transitional	17 – 19	Brook, Brown, Rainbow, Trout: Sculpins
Cool	19.1- 20.49	Rock Bass, Darters, Rainbow & Brown Trout, some minnows
Cool-Warm Transitional	20.5 - 21.99	Walleye, Perch, Darters, Pike, Smallmouth Bass, most minnows
Warm	>22	Carp, Sunfish, Largemouth Bass,

Temperature Nomogram Examples

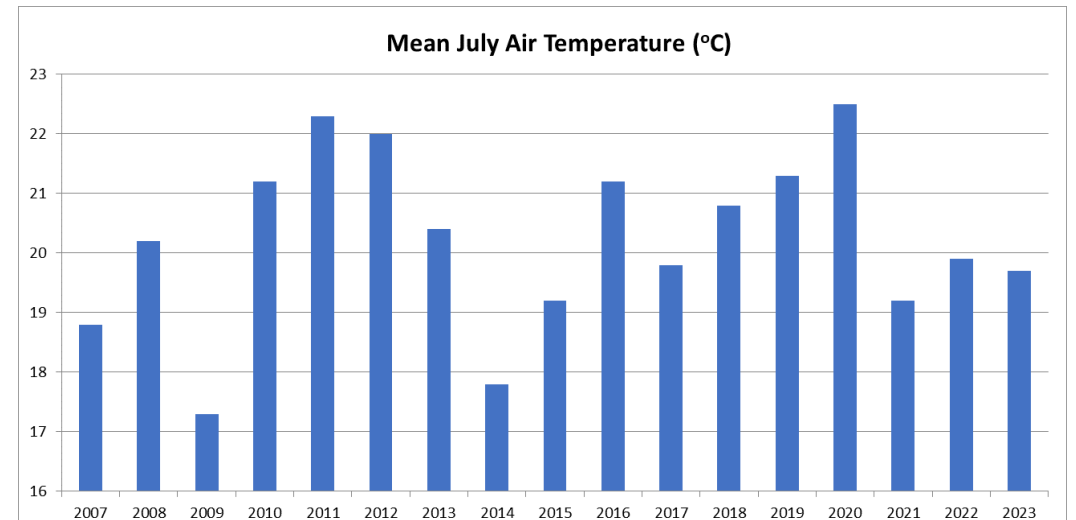


Recent Weather Trends (Brantford Airport)



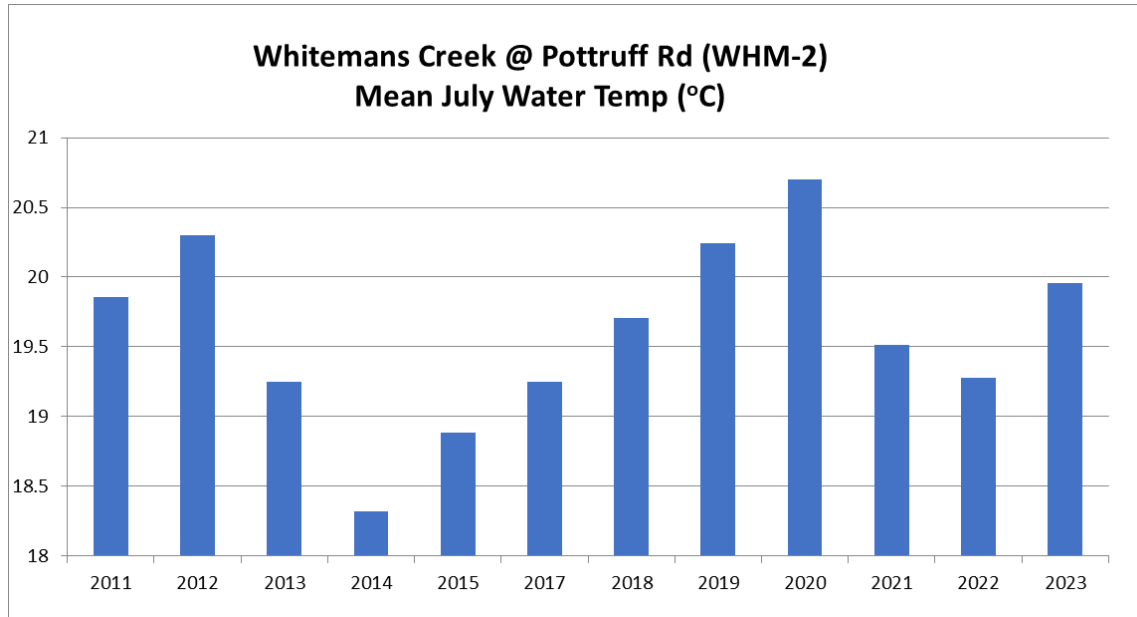
Bad for Trout Survival

Good for Trout Survival

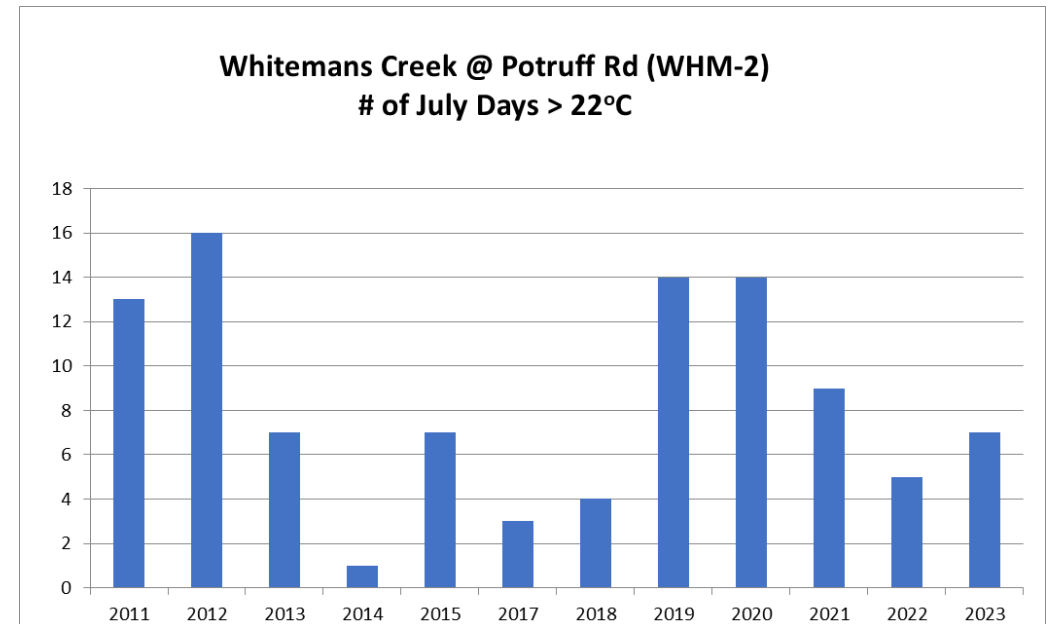


Recent Water Temperature Trends

Potruff Road – Station WHM-2



2023 had average air temperatures, but mean July water temperature at Potruff Rd approached conditions that reflect hot July air temperature years (2011, 2012, & 2020)



2023 Temperature Summary

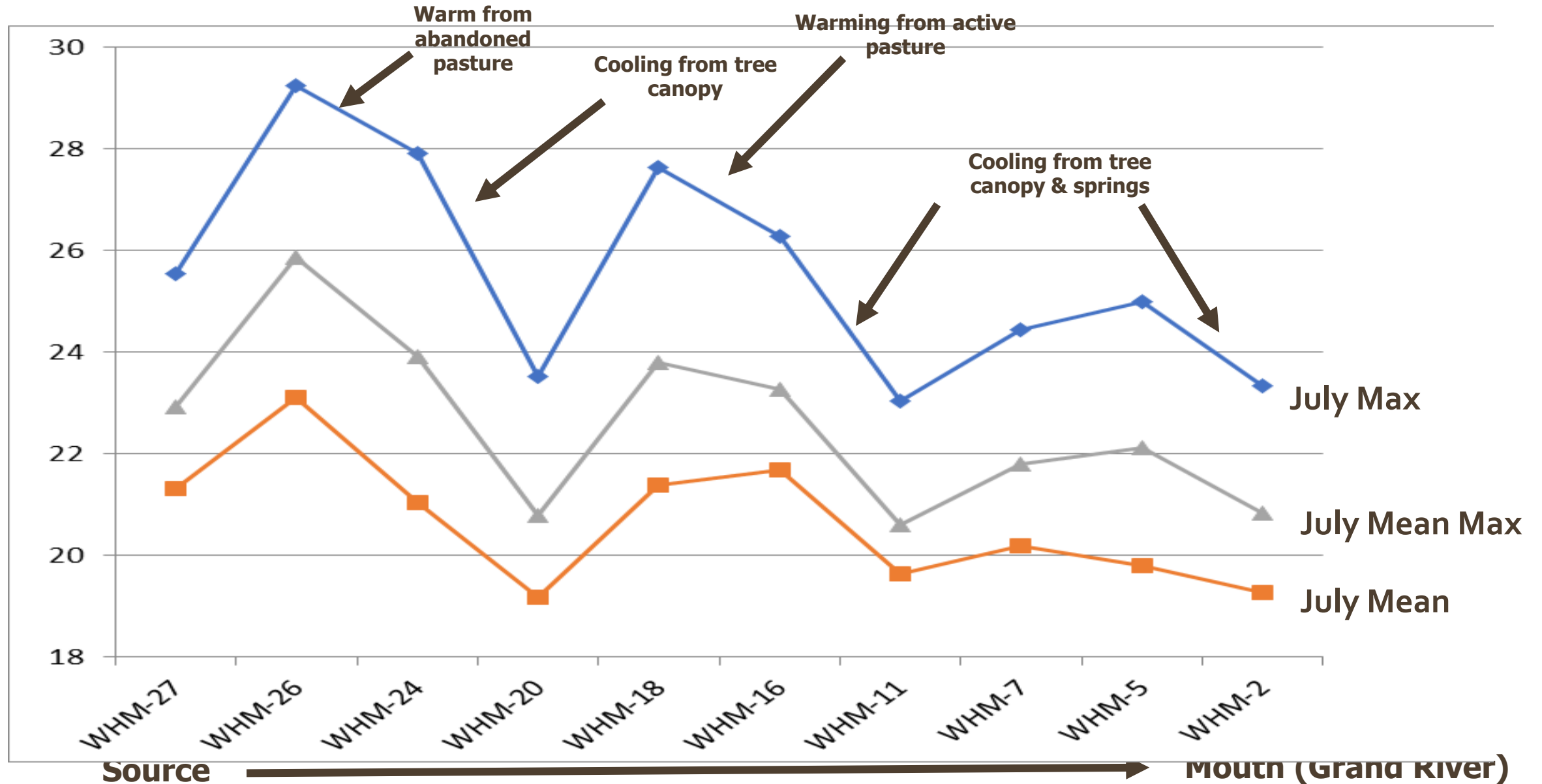
STATION	LOCATION	Thermal Class (July Mean)*	Nomogram Class	July 2023 Metric Value (°C)					Number of July Days in 2023		
				Mean	Mean Max	Max	Min	Mean Min	Max >20°C	Max >22°C	Min >19°C
WHM-2	Potruff Road	Cool	Cool-Warm	19.96	21.49	23.38	17.39	18.63	29	7	8
WHM-7	BishopGate Rd	Cool	Cool-Warm	20.36	21.42	23.02	18.13	19.53	30	9	20
WHM-11	Middle Townline	Cool	Cool	19.92	20.11	21.8	18.27	19.59	13	0	19
WHM-16	Blenheim Rd 2	Cool-Warm	Cool-Warm	20.99	21.8	24.82	18.41	20.08	29	12	25
WHM-22	Oxford Rd 29	Cool	Cool	19.69	20.36	22.8	17.27	18.91	16	4	14
WHM-23	Hubbard Rd	Cool	Cool	19.6	20.52	23.02	16.89	18.64	19	5	10
WHM-25	Blenheim Rd 10	Cool	Cool-warm	20	21.4	25.84	16.89	18.62	23	12	10
WHM-26	Oxford Rd 8	Cool	Cool-Warm	20.18	21.6	25.82	17.01	18.88	22	13	12
WHM-27	Blandford Rd	LOST	LOST								
LND-1	D/S BRGC dam	Cold	Cool	16.94	17.96	20.72	13.69	15.77	2	0	0
LND-2	Bishop Gate Rd	Cold	Cold-Cool	16.34	17.29	20.13	13.33	15.29	2	0	0
LND-3	Concession 5	Cold	Cold-Cool	15.49	16.74	19.39	12.82	14.22	0	0	0
LND-4	Golf Links Road	Cold	Cold-Cool	14.71	16.29	19.37	11.73	13.48	0	0	0
GBT-1	Gilbert Cr Paris	Cold	Cold	12.51	14.38	15.61	10.37	11.25	0	0	0

Mouth

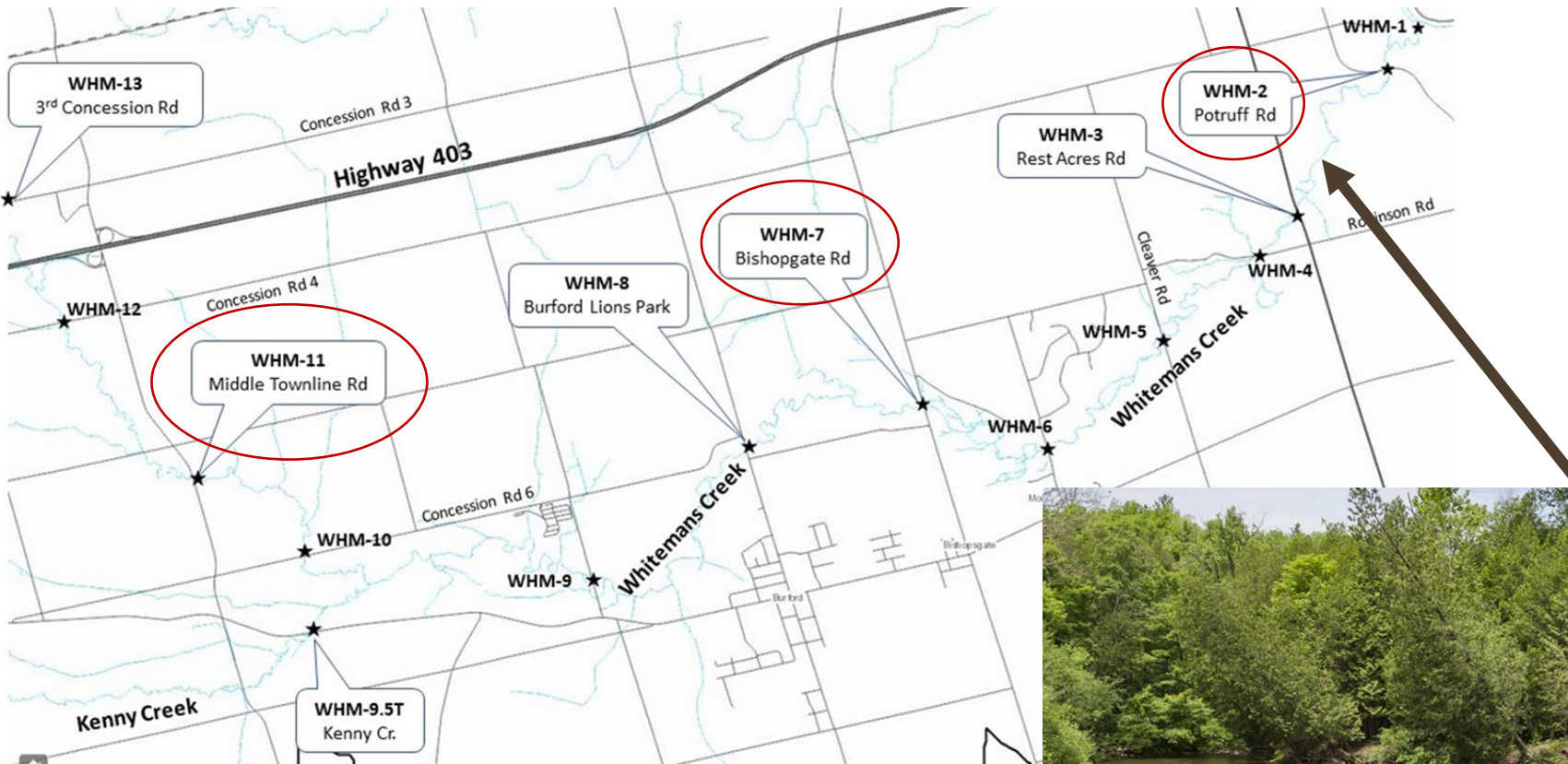


Source

2022 Whitemans Cr. Temperature Trends (spatial)

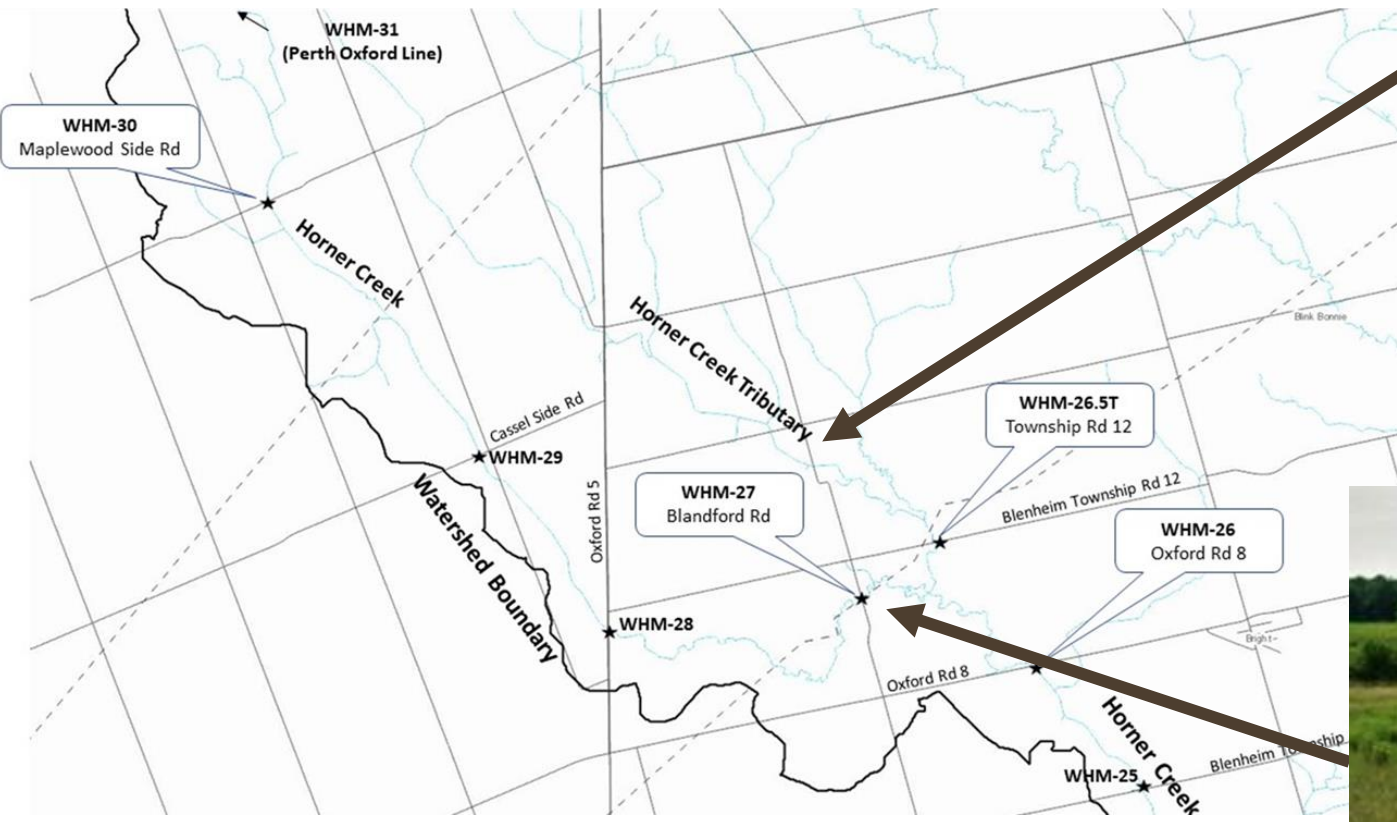


Lower Whitemans Temperature Stations



- Well forested
- Relatively deep valley, good gradient
- Lots of groundwater and cold tributaries

Upper Horner Creek (Headwaters)



- Tight clay soils
- Intensive agriculture
- Riparian: almost 100% open Canopy

Conclusions/ What's next in 2024

- Additional temperature monitoring in 2024 to build long term data sets
- Temperature data is an inexpensive, easy way to inform where we should best direct our outreach and rehabilitation efforts (e.g. tree planting in areas with low canopy cover)
- E-fishing in 2024 will focus on Landons and Airport Creek
- Establish better protocols for spawning surveys



Spawning steelhead - Whitemans Creek



Communications Report

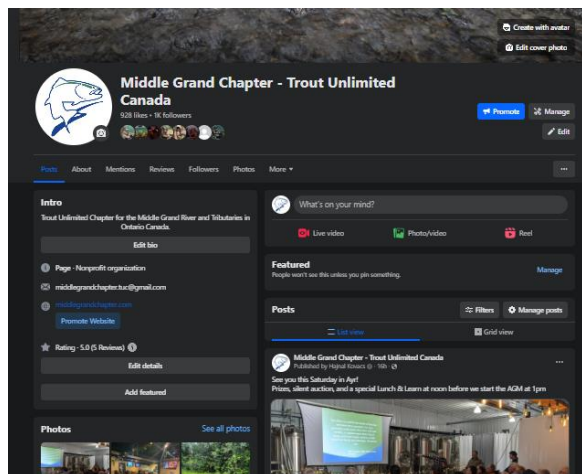
Andy Dietrich



Trout Unlimited Canada



Truite Illimitée Canada



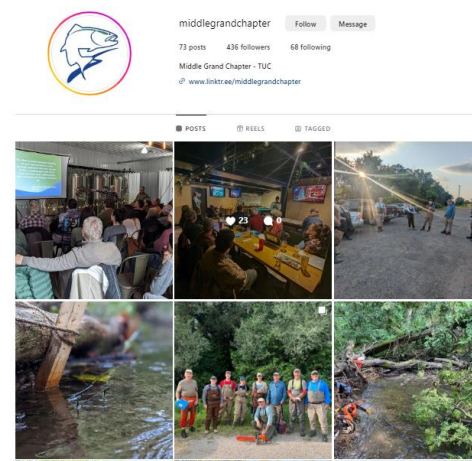
[MiddlegrandchapterTUC](https://www.facebook.com/middlegrandchapterTUC)

928 Likes (+46)
1,000 Followers (+57)



[TUCmiddleGrand](https://twitter.com/TUCmiddleGrand)

128 Followers (-1)



[Middlegrandchapter](https://www.instagram.com/middlegrandchapter)

436 Followers (+51)



[Email Distribution List - middlegrandchapter.tuc@gmail.com](mailto:middlegrandchapter.tuc@gmail.com)

www.middlegrandchapter.com

JOIN NOW

About Us

Documents

Projects

Home Page

Trout Unlimited
CANADA



Middle Grand
CHAPTER

MIDDLE GRAND CHAPTER

Our Trout Unlimited Chapter focuses its efforts on the



Middle Grand Chapter - Tro...
1,002 followers

[Follow Page](#)

[Learn more](#)



Middle Grand Chapter - Trout
Unlimited Canada

on Wednesday



See you this Saturday in Ayr!
Prizes, silent auction, and a special Lunch &
Learn at noon before we start the AGM at
1pm



2024 Membership Renewal

All current memberships expire March 31st
Minimum donation of \$40 (tax deductible)

Half of your membership donation goes directly to the
Chapter of your Choice





Questions?





Nominations



Chapter Executives – 16 Current Exec. Members

Hajnal Kovacs, President

Larry Mellors, VP

Tyler Dunsmore, VP

Amanda Draves

Andy Dietrich

Archie McLarty

Barry Buchwald

Brent Elliott

Larry Bell

Larry Halyk

Mark Hartley

Mike Heyming

Scott Puillandre,

Stephanie Lantos

Steve Becket

Warren Yerex

Chapter Executives

Hajnal Kovacs, President

Larry Mellors, VP

Tyler Dunsmore, VP

Amanda Draves

Andy Dietrich

Archie McLarty

Barry Buchwald

Brent Elliott

Larry Bell

Larry Halyk

Mark Hartley

Mike Heyming

Scott Puillandre

Stephanie Lantos

Steve Becket

Warren Yerex

Stands

Steps down



Conclusion

